

October 31, 2005

Honorable Mayor and Members of  
The Hermosa Beach City Council

Regular Meeting of  
November 08, 2005

**PROJECT NO. CIP 03-418 SEWER IMPROVEMENTS  
UPGRADE OF SEWAGE LIFT STATIONS REQUEST TO DISPENSE WITH BIDDING**

**Recommendation:**

It is recommended that the City Council:

1. Authorize purchase of a "Gorman-Rupp, Above-ground Submersible Valve Package (ASVP)" sewage lift station from California Environmental Controls, Inc. of Whittier, California, in the amount not to exceed \$60,500.00;
2. Authorize the Public Works Director to execute and the City Clerk to attest the purchase contract subject to approval by the City Attorney; and
3. Authorize the Director of Public Works to make minor changes as necessary within the contingency of \$6,000.

**Background:**

This new pre-packaged sewer lift station is to replace the existing system at The Strand and 35th Street. Staff was authorized to sole source the Gorman-Rupp lift station through California Environmental Controls, Inc (CEC) at the July 26, 2005 City Council meeting and therefore has been working with CEC to develop an appropriate system.

There is an approximate 4-month lead-time required for delivery of the system. Prior to assembly and delivery of the system, Gorman-Rupp will prepare and submit plans and specifications for review by Public Works. Staff anticipates advertising and awarding the construction contract during this period.

The construction contract will consist of the installation of the Lift Station and at The Strand, abandonment of the Ingleside Drive lift station, and the sewer tie-in connections to City of Manhattan Beach's system on Ingleside Drive.

**Analysis:**

Options selected by staff include features that will facilitate emergency sewage bypassing, upgrades to panel enclosures, redundant high water alarm float, safeguard for the pressure

gauge, pump discharge failure protection, and automated phone dialer using cellular based communications.

The automated phone dialer, which includes a battery backup, is designed to continuously monitor preset alarm points and notify City personnel of any alarm condition.

The cellular based dialer will require wireless phone service, which can be obtained as an "extra line" through our current Public Works' wireless plans.

Staff recommends sole-sourcing the Gorman-Rupp pumps due to their expertise and reliability in the areas of wastewater conveyance. Gorman-Rupp provides a five-year warranty on the pumps and packaged systems, and a twenty-year warranty on the pump enclosures. Additionally, Staff recommends that the City procure the lift station in order to save on Contractor mark-up fees and to also shorten delivery lead-time.

**Fiscal Impact:**

The purchase contract amount of \$60,500 plus contingency of \$6,000 brings the total to \$66,500. There are sufficient funds in the project account. No additional appropriation is necessary at this time.

Attachment 1: Copy of Gorman-Rupp purchase contract

Respectfully submitted,

Concur:



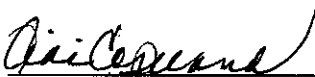
Frank Senteno, P.E.  
Associate Engineer



Richard D. Morgan, P.E.  
Director of Public Works/City Engineer

Noted for Fiscal Impact:

Concur:



Viki Copeland  
Finance Director



Stephen Burrell  
City Manager



**MANUFACTURERS OF PUMPS  
AND  
PACKAGE PUMPING SYSTEMS**

**The Gorman-Rupp Company**  
P.O. Box 1217 305 Bowman St.  
Mansfield, Ohio 44902  
Phone: 419-755-1011

**PROPOSAL / CONTRACT**

Purchaser: City of Hermosa Beach  
Civic Center  
1315 Valley Drive  
Hermosa Beach, CA 90254  
ATTN: Frank Senteno  
Phone No: 310-318-0238

Page 1 of 6  
DATE: October 28, 2005  
QUOTE NO.: 0412324 B Rev 2  
For: The Strand  
Sewage Lift Station

NOTE: Our Contract includes only the provisions set forth below and the terms & conditions on the reverse page hereof, including without limitation the reservation of security interest and warranty and liability limitations and price escalation clause.

One (1) Gorman-Rupp Above-ground Submersible Valve Package (ASVP) sewage lift station, including duplex pumps, valve package, liquid level / motor controls, and accessories, assembled, tested and mounted on a fiberglass encapsulated, reinforced concrete base with light weight aluminum dual access doors. Valves and controls are housed in a fiberglass enclosure with fiberglass access doors.

SUB TOTAL 'A' ..... \$45,885.00

One (1) Lot, optional equipment per attached Scope of Supply

SUBTOTAL 'B' (Items 7 through 12 ..... \$9,860.00  
TOTAL PRICE ..... \$55,745.00

- NOTES: 1. Please refer to the attached Scope of Supply for a detailed description of the equipment and service included in this proposal/contract. Warranty information is also included.  
2. The above price includes factory testing, and freight to job site.  
3. This proposal does NOT include tax, installation, or any item not specifically mentioned.

TERMS: NET 30 DAYS ON APPROVED CREDIT F.O.B. MANSFIELD, OH FULL FREIGHT ALLOWED TO JOB SITE  
ESTIMATED SUBMITTAL TIME : 4-6 WEEKS ESTIMATED PRODUCTION TIME: 8-10 WEEKS AFTER RELEASE TO PROD.

Accepted this \_\_\_\_\_ day of \_\_\_\_\_, 2005

SUBMITTED this 27th day of October, 2005

City of Hermosa Beach  
Name of Purchaser

California Environmental Controls, Inc.  
Gorman-Rupp Representative

By: \_\_\_\_\_  
Authorized Signature

By:   
Authorized Signature  
Patrick F. Kennedy

Printed Name & Title

Printed Name & Title

*If this proposal is accepted please sign and send to:*  
Gorman-Rupp Co.

c/o California Environmental Controls, Inc.

Post Office Box 469  
Whittier, CA 90608-0469  
562-945-3425

## The Gorman-Rupp Company TERMS AND CONDITIONS

PROPOSAL DRAWING and bulletin illustrations are submitted to show general arrangement and approximate dimensions. The Company reserves the right to make such changes in details of design, construction or arrangement of equipment as in its judgement constitute as improvement. Engineering, dimensional and instruction data shall be furnished to the purchaser promptly after acceptance of the proposal for approval. Changes in layout of design requested by purchaser after acceptance of proposal will be made at purchaser's expense.

The equipment, apparatus and parts furnished are WARRANTED against defects in materials and workmanship for a period of one (1) year, excepting only those items normally consumed in service, such as light bulbs, oil, grease, packing, gaskets, o-rings, etc.

NO OTHER WARRANTY, EXPRESS OR IMPLIED, INCLUDING ANY WARRANTY OR MERCHANTABILITY OR FITNESS, SHALL EXIST AS TO ANY EQUIPMENT OR GOODS COVERED HEREBY, ALL SUCH WARRANTIES BEING EXPRESSLY WAIVED BY THE PURCHASER.

The Company will, at its option, repair or replace any equipment or part which proves defective under its warranty provided that the purchaser notifies the Company in writing of such defect within the applicable warranty period and provided further that after start-up service has been performed, the labor to replace accessory items, such as sump pumps, dehumidifiers, relays or alternators, etc., shall be the responsibility of the owner's maintenance personnel. The foregoing states the purchaser's sole remedy for any breach of warranty by the Company.

### PRICE ESCALATION CLAUSE:

Quoted prices are firm for sixty (60) days subject to an escalation not to exceed 5% for the following sixty (60) days and 1-1/2% per month thereafter.

Orders accepted by The Gorman-Rupp Company will be held firm if the orders are approved and released for production within sixty (60) days provided shipment is accepted by the customer immediately following completion of production.

Orders accepted by The Gorman-Rupp Company where production release or shipment is delayed by the customer beyond sixty (60) days following acceptance of order by The Gorman-Rupp Company, prices will be subject to an escalation not to exceed 1-1/2% per month until again released.

Price escalation will not exceed Federal guidelines.

THE AMOUNT OF ANY APPLICABLE TAX or other Government charge upon the production, sales, shipment and/or use of the equipment covered by this quotation shall be added to the price and shall be paid by the purchaser.

ALL ORDERS SHALL BE MADE OUT the The Gorman-Rupp Company, 305 Bowman Street, Mansfield, Ohio, and shall be subject to acceptance by the Company. ORDER MAY BE CANCELED ONLY with the Company's written consent and ON TERMS that will indemnify the Company against loss.

Performance of any contract by the Company shall be contingent upon credit approval, strikes, fires, accidents, war reduced supply of fuel or raw materials, or other restraints affecting shipments or curtailments in manufacturing or due to delays unavoidable or beyond the control of the Company.

THE COMPANY SHALL NOT, in any event, be liable for indirect, special, consequential or liquidated damages or penalties, whether based upon contract, warranty, tort or negligence.

When purchaser asks that equipment be warehoused or held for a stated or indefinite period after the equipment is ready for shipment, it is expressly understood and agreed that billing will be accepted as of the date when the equipment is ready for shipment and that STORAGE CHARGES (NOT TO EXCEED 1-1/2% PER MONTH) will apply thirty (30) days from that date.

Unless otherwise specified, DELIVERIES QUOTED are figured from the date of release to production. Statements as to expected shipment dates from the factory represent the Company's best judgement. Purchaser hereby waives all claim to damage caused by delay in shipment or delivery.

Unless otherwise specified, TERMS are Net 30 days from date of invoice, F.O.B., Mansfield, Ohio, with freight allowed to the job site or first destination, whichever is applicable. All terms of credit are subject to the Company's approval and are independent of and not contingent upon the time and manner in which the purchaser may receive payment from others. Purchaser shall be notified of any changes in credit terms prior to acceptance of order.

ANY INDEBTEDNESS OWING TO THE COMPANY for a period longer than thirty (30) days shall BEAR INTEREST until paid at the current prime rate. If the Company finds it necessary to place any indebtedness hereunder in the hands of an attorney for collection, purchaser shall pay all expenses and costs of collection, including reasonable attorney's fees.

THE PROVISIONS on the face hereof and these Terms and Conditions constitute the entire agreement among the parties and supersede the provisions of any purchase order, other communication between the parties or any statement or representation not included herein. This Agreement may not be modified or amended except in a writing signed by the parties intended to be bound thereby.

This Agreement shall be governed by the laws of the State of Ohio.

**SCOPE OF SUPPLY**  
**FOR**  
**THE STRAND LIFT STATION**

**One (1) Gorman-Rupp Above-ground Submersible Pump Valve Package (ASVP) sewage lift station including:**

**ITEM QTY DESCRIPTION**

- |   |   |  |
|---|---|--|
| 1 | 2 | Gorman-Rupp Model JSV3D60-E4 submersible pumps, each including: <ul style="list-style-type: none"><li>o 4 HP, 3pH, 460 VAC 1750 RPM motor</li><li>o 3" solids capacity</li><li>o 150 gpm @ 32 Ft. TDH</li><li>o 26 Ft. power/control cable (std)</li><li>o 30 Ft. lifting cable</li><li>o Stainless steel shaft</li><li>o Slide rail guide shoe with neoprene seal</li><li>o 90° baseplate elbow with sliderail mounts</li><li>o Slide rail installation kit (top of wet well)</li></ul> |
|---|---|--|

**NOTE: Refer to Gorman-Rupp specification data sheet Section 138 Page 80 for pump/motor specification, and hydraulic curves.**

- |   |   |  |
|---|---|--|
| 2 | 1 | Pump station control panel, including: <ul style="list-style-type: none"><li>o Marine grade stainless steel enclosure (NEMA 3R)</li><li>o Thermal magnetic branch circuit breakers</li><li>o Main entrance terminal blocks</li><li>o Full voltage NEMA rated starters with overload protection on all phases (Class 10)</li><li>o Panel corrosion inhibitor</li><li>o Transient voltage surge suppressor</li><li>o Power transformer, 3 KVA</li><li>o Alarm silence switch</li><li>o H-O-A switch</li><li>o Motor overload resetters</li><li>o GFI receptacle</li><li>o Pump motor moisture/thermal shutdown indicator</li><li>o Two (2) air pumps with selector switch</li><li>o Air pump flow indicator</li><li>o Air bell, one (1) shipped loose</li><li>o Panel heater</li></ul> |
|---|---|--|

ITEM QTY DESCRIPTION continued

- o EPS 2000 microprocessor-based liquid level control including:

- ... Water level simulator
- ... Pump start delay
- ... 4-20 mAdc level signal
- ... Internal transducer (0-15 psi standard)
- ... High/ low water alarm circuit
- ... Lead pump/lag pump alternator

3 1 Lot, station piping including:

- o Two (2) individual swing check valves
- o Plug valves
- o Customer connection piping, extended 6" below station slab
- o Discharge pressure gauge
- o Air release / bypass

4 1 Fiberglass station enclosure, including:

- o Two (2) sets hinged fiberglass access doors
- o Thermostatically controlled vent fan
- o Integral static wet well vent
- o Fiberglass encapsulated reinforced concrete base with duplex light weight wet well access hatch
- o Portable hoist and socket

5 1 **Lot, Freight to job site**

6 1 **Lot, Equipment layout, start up instructions, and operator training**

**OPTIONS**

7	1	Suction / discharge bypass piping .....	\$2,065.00
8	1	Station insulation .....	\$1,050.00
9	1	Redundant high water alarm float .....	\$695.00
10	1	Stainless Steel diaphragm pressure gauge protection .....	\$985.00

ITEM QTY DESCRIPTION continued

11	1	RACO verbatim auto-dialer (8 channel) .....	\$3,050.00
12	1	Discharge failure protection .....	\$2,015.00

(A microswitch is mounted on each check valve. If the duty pump fails to operate within a pre-set time, the standby pump is activated and a dry contact alarm signal is sent to the EPS controller.)

SUB TOTAL (ITEMS 7 – 12) ..... \$9,860.00

LOT NET TOTAL ..... \$55,745.00

NOTE: Gorman-Rupp does not provide sacrificial anodes. Contractor can add anode after station is installed.

**NOTES:**

1. This quotation includes only equipment specifically mentioned herein and does not include, or infer inclusion of, any additional equipment, piping valves, wiring, installation or services etc., regardless of its relation to the quoted equipment.
2. Some of the remaining items that are not included in our scope of supply are listed as follows:
  - a) Any excavating, backfilling, seeding, grading, dewatering or gravel base
  - b) Electric service, main disconnect switch or hook up of same
  - c) Influent or effluent / discharge piping
  - d) Wet Well
  - e) Taxes, fees, permits or licenses
  - f) Stainless steel guide rails, 1 ½"
  - g) Bolts
3. Please note that although the contract states that there is a one - year warranty, the ASVP station carries a five (5) year warranty on equipment and a twenty (20) year warranty on the fiberglass enclosure. (See attached warranty.)

**NOTES continued**

- 4. If you wish to purchase this equipment, please sign this proposal / contract form and return it to:**

**California Environmental Controls, Inc.  
P.O. Box 469  
Whittier, CA 90608-0469**

**ATTN: Patrick F. Kennedy**



schematics, block diagrams, and simplified schematics shall not be provided in lieu of an overall system diagram.

- f. Mechanical layout drawing of the pump station and components, prepared in accordance with good commercial practice, shall provide installation dimensions and location of all pumps, valves and piping.
3. Operation and maintenance instructions which rely on vendor cut-sheets and literature which include general configurations, or require operating personnel to selectively read portions of the manual shall not be acceptable. Operation and maintenance instructions must be specific to equipment supplied in accordance with these specifications.

#### 1.6. QUALITY ASSURANCE

- A. The pumps and pump station manufacturer must be certified to ISO 9001 by an accredited certification agency.
- B. Upon request from the engineer (or owner), the pump station manufacturer shall prove financial stability and ability to produce the station within the specified delivery schedules. Evidence of facilities, equipment and expertise shall demonstrate the manufacturer's commitment to long term customer service and product support.
- C. All pump openings and passages shall be of adequate size to pass 3.15" diameter spheres (minimum) and any trash or stringy material which can pass through an average house collection system.
- D. The manufacturer's technical representative shall inspect the completed installation, correct or supervise the correction of any defect or malfunction, and instruct operating personnel in the proper operation and maintenance of the equipment as described in Part 3 of this section.

#### 1.7. MANUFACTURER'S WARRANTY

- A. The pump station manufacturer shall warrant all equipment to be of quality construction, free of defects in material and workmanship. A written warranty shall include specific details described below.
  1. Fiberglass components of the station enclosure shall be warranted for 20 years to resist UV damage, corrosion from moisture or corrosive soils, or physical failures occurring in normal service, without the need for special protective coatings, when installed according to the manufacturer's recommendations.
  2. The pumping units installed in this station are warranted for a period of five (5) years or 10,000 hours of operation from the time of shipment from the factory. The conditions of this

warranty are predicated on factory approved installation and start-up of equipment in permanent municipal waste water installation. This warranty covers failures due to defects in material and workmanship. The warranty does not cover normal wear and tear on equipment. The pump station manufacturer will pay a percentage of the list price for replacement parts in labor as follows provided the pump with cable attached is returned pre-paid in accordance with the instructions:

Pump Warranty Obligation

Months after Shipment	0-18	19-38	40-60
Hours of Operation	0-2,999	3,000-6,499	6,500-10,000
G-R Share of the Costs	100%	50%	25%

3. All remaining equipment apparatus and parts furnished shall be warranted for a period of five (5) years, excepting those items that are normally consumed in service such as light bulbs, oil, grease, packing, gaskets, o-rings, etc. The pump station manufacturer shall be solely responsible for the warranty of the station and all components.
- B. Components failing to perform as specified by the engineer (or owner), or as represented by the manufacturer, or as proven defective in service during the warranty period, shall be replaced, repaired, or satisfactorily modified by the manufacturer without cost of parts or labor to the owner.
  - C. It is not intended that the station manufacturer assume liability for consequential damages or contingent liabilities arising from failure of any vendor supplied product or part which fails to properly operate, however caused. Consequential damages resulting from defects in design, or delays in delivery are also beyond the manufacturer's scope of liability.
  - D. The warranty shall become effective upon the acceptance by the purchaser or the purchaser's authorized agent, or sixty (60) days after installation, or ninety (90) days after shipment, whichever occurs first.
  - E. In order to unify responsibility for proper operation of the complete pumping station, it is the intent of these Specifications that all system components be furnished by a single supplier (unitary source). The pumping station must be of standard catalog design, totally warranted by the manufacturer. Under no circumstances will a system consisting of parts compiled and assembled by a manufacture's representative or distributor be accepted.

PART 2 - PRODUCTS

CEC



# Submersible Pump

Electric Motor Driven  
Model JSV3D60-E4

Size 3"



APPROVED

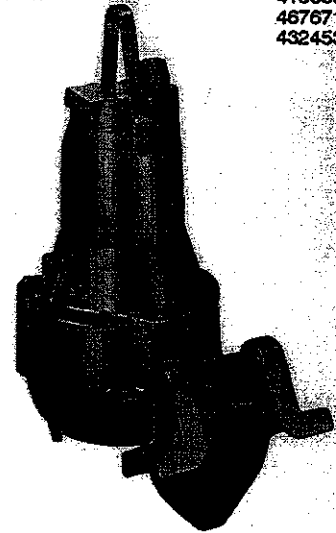
X-PROOF MOTORS FOR CLASS 1,  
DIV. 1, GROUPS C&D LOCATIONS  
(See Note for Ordering FM)

### PUMP SPECIFICATIONS

Casing: Gray Iron No. 30.  
Impeller: Winglet Vane Vortex, Ductile Iron No. 80-55-06  
Handles 3.15" (80 mm) Diameter Spherical Solids.  
Seal Housing: Gray Iron No. 30.  
Lower Bearing Bracket: Gray Iron No. 30.  
Motor Housing: Gray Iron No. 30.  
Motor Shaft: Stainless Steel No. 329.  
Bearings: Ball Type, Permanently Lubricated.  
O-Rings: Nitrile Rubber.  
Hardware-External Wetted: Stainless Steel No. 304.  
External Surface Protection: Black Epoxy Paint.  
Standard Equipment: Slide Rail Guide Shoe w/Neoprene Seal,  
Hoisting Bail.  
Optional Equipment: 90° Baseplate Elbow, Pump Control Panel,  
Slide Rail Installation Kit.

Note: When Ordering FM Approved  
Model, Specify "X" Instead of  
"E" Following Hyphen in  
Model Number.

U.S. PATENT  
4193604  
4676718  
4324531



### MOTOR/CABLE SPECIFICATIONS

Motor: 4 H.P., 60 Hertz, 1750 R.P.M., Three Phase, \*230, 460 or 575  
Volts, 12.4/6.2/5.0 Full Load Amps, NEMA Code E, 1.10 Service  
Factor, Air Filled Enclosure, Squirrel Cage, Induction Start, G-R  
Frame No. 1, Class F Insulation Rated 311°F (155°C), 104°F  
(40°C) Ambient Plus, 239°F (115°C) Temperature Rise. Max.  
Submergence Depth 65 Feet (20 Meters).  
Std. Features: Moisture Sensor Switch, Thermal Protection Switches,  
Across-the-Line Motor Wiring Connection.

†Power/Control Cable: Neoprene Jacket, Single Cable, 16 AWG.,  
7 Wire Conductors (2 Conductors Used for Moisture and  
Thermal Protection).

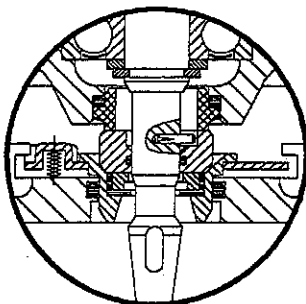
\*\* 26 Feet (8 Meters) Provided Standard.

Maximum Temperature of Liquid Pumped: 104°F (40°C).

\* Specify Voltage Required at Time of Order.  
(Dual Voltage for 230/460 Three Phase Motors).

\*\* For Different Lengths, Specify at Time of Order.

†See Accessories Section for CSA-Approved Cable Specifications.  
Specify CSA When Ordering.



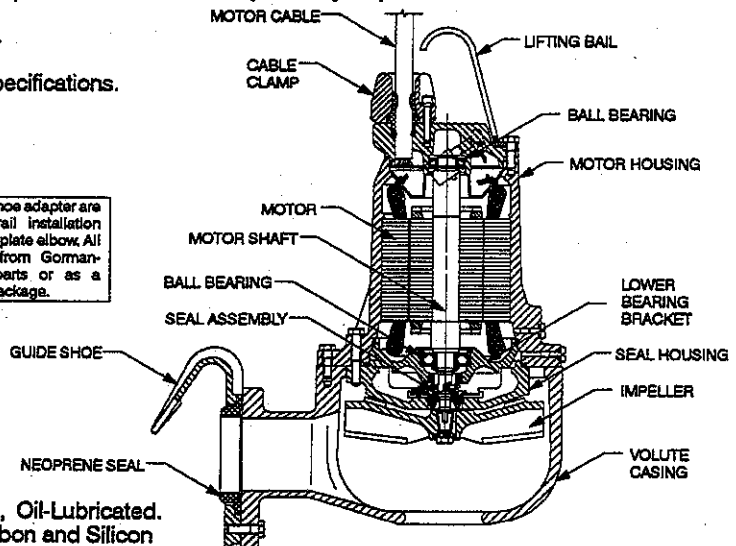
The pump and guide shoe adapter are  
designed for slide rail installation  
using an optional baseplate elbow. All  
items are available from Gorman-  
Rupp as separate parts or as a  
complete lift station package.

### SEAL SPECIFICATIONS

Mechanical Double Seal, Self-Aligning, Double Floating, Oil-Lubricated.  
Lower Faces are Silicon Carbide, Upper Faces are Carbon and Silicon  
Carbide, Fluorocarbon Elastomers (DuPont Viton® or Equivalent).



Use only X-proof model for application in Class I,  
Division I, Groups C and D X-proof environments,  
or where trace amounts of volatile, flammable  
liquids may be present.



THE GORMAN-RUPP COMPANY • MANSFIELD, OHIO

GORMAN-RUPP OF CANADA LIMITED • ST. THOMAS, ONTARIO, CANADA

Specifications Subject to Change Without Notice

Printed in U.S.A.

# J Series®

## PACKAGED SUBMERSIBLE PUMPING SYSTEMS

**GR**  
GORMAN-RUPP  
PUMPS  
*The Pump People*

Gorman-Rupp's unique, J Series® Packaged Submersible Pumping System places controls and valves above ground in an attractive, corrosion-, mildew- and vandal-resistant fiberglass enclosure.

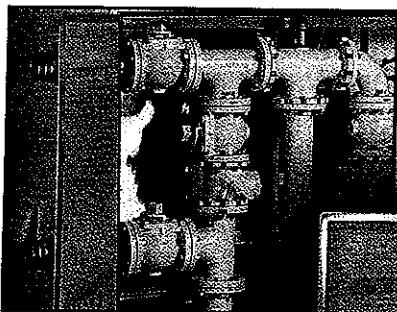
This design permits safe and easy access to controls or valves for maintenance or service. No need for service personnel to enter a hazardous valve pit.

Compact, economical design reduces site space requirements by eliminating the need for a separate valve pit.

Gorman-Rupp Packaged Submersible Pumping Systems are available with J Series® slide rail-mounted submersible pumps, 3" to 6" pump sizes, capacities to 2300 GPM and heads to 205 feet. Larger sizes are available utilizing other enclosures.

**Single Source System Responsibility** — An efficient and reliable pumping system is dependent on the precise matching of the pumps, motors and controls. Gorman-Rupp designs, engineers and manufactures the entire pumping system to ensure that the system meets your requirements and performs reliably year after year. When you buy from Gorman-Rupp, you never really just buy a pump. If there is a problem with the system you only have to make one call. From pumps and controls to the lights and ventilation blowers in our enclosures, we have an experienced staff of engineers dedicated to their design and construction. Their extensive knowledge of electronics, mechanics and hydraulics is at your disposal. And, our 5-year limited station warranty covers the entire packaged system. The J Series® Submersible Pump has a prorated 5-year warranty.

UL listing available on complete station (excluding enclosure).



Optional discharge and suction line bypass pump connection available.

- Discharge bypass connection allows for emergency portable bypass pump access to the pump station force main after isolation of the pumps.
- Suction bypass connection incorporates opening to allow emergency portable bypass pump access to pump station wet well.

